

Creating Graphics using Tactile Macros in CorelDraw v.2020

Agenda

- Installing Tactile Macros and Tactile Macros Command Bar
- Getting Started in CorelDraw2020
- Style tab for making measure lines, textured shapes, angle signs etc
- Make Graphs (Line graph, Cartesian graph, Bar Graph and Histogram) using Tactile Macros
- Draw a number Line using Tactile Macros
- Draw a pie chart and a spinner using Tactile Macros
- Draw an angle and a triangle using Tactile Macros
- Draw a clock using Tactile Macros
- Draw a protractor using Tactile Macros
- Draw a Graphics Calculator

INSTALLING TACTILE MACROS

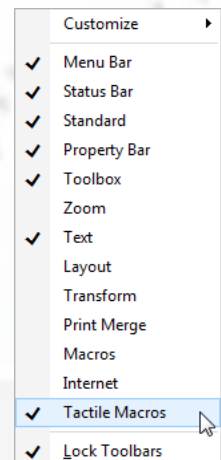
- Make sure CorelDraw is closed.
- **IMPORTANT:** If you already have a previous version of the macros, delete it before installing a new version.
- Before installing the Tactile Macros, go to Corel Draw 2020 folder, right click on the folder. Select properties, under "security tab" change the permissions to "full control".
- The 4 files that you require to use the macros are: Tactile Macros.cdws, TactileMacrosV13.4 gms, TM_Clipart_1.cdt and TM StyleSheet (CDSS File)

INSTALLING TACTILE MACROS COMMAND BAR

TM

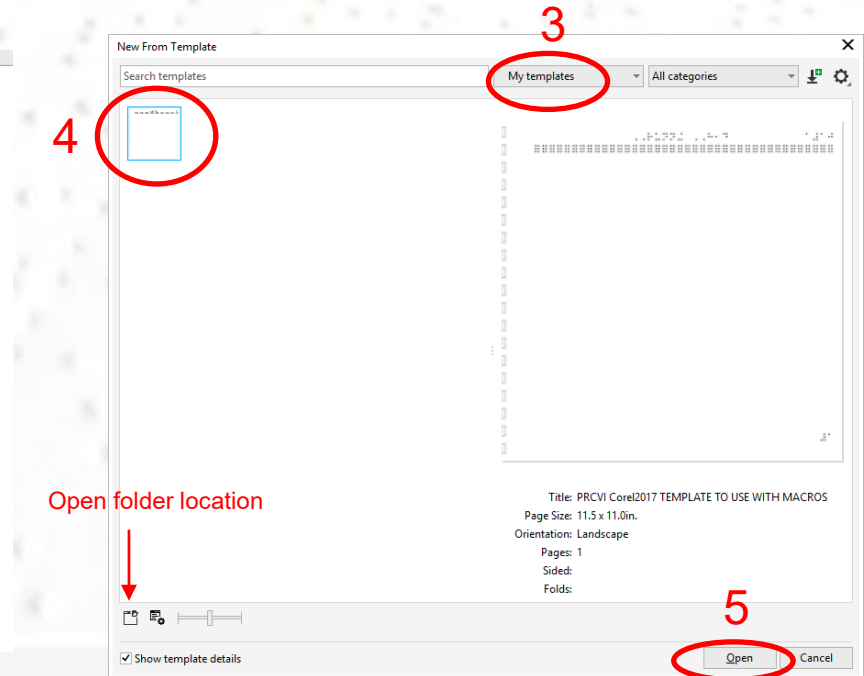
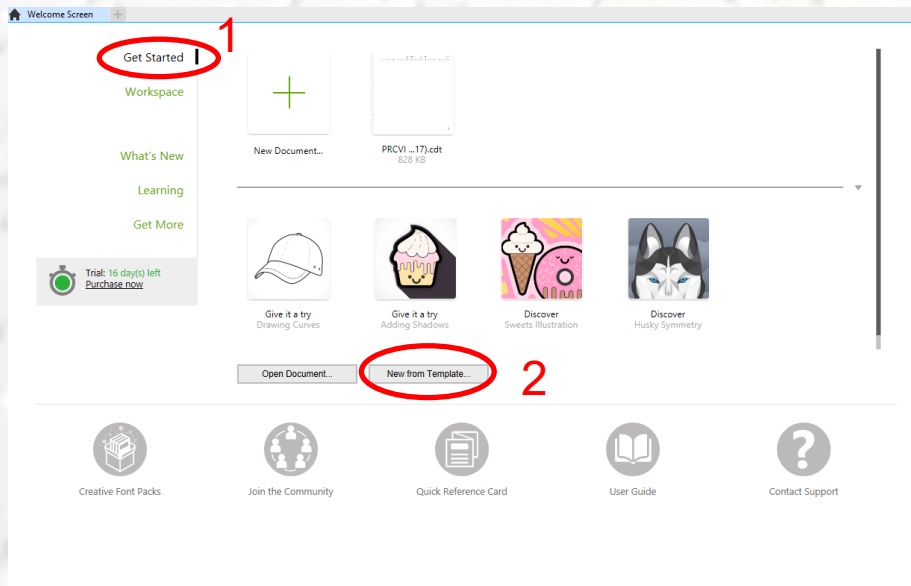
- Open CorelDraw
- Place your cursor over the property toolbar at the top of the CorelDraw window.
- Right-click
- Select Customize > Workspace > Import
- In the Import Workspace dialogue box that is displayed, browse to the desktop where you copied the files. Select Tactile Macros.cdws
- Click Open
- Click Next
- On the next display, make sure Tactile Macros is checked.
- Click Next twice, then Finish
- Right-click the top Command Bar again.
- In the list displayed, click Tactile Macros to turn on this Command Bar

TM




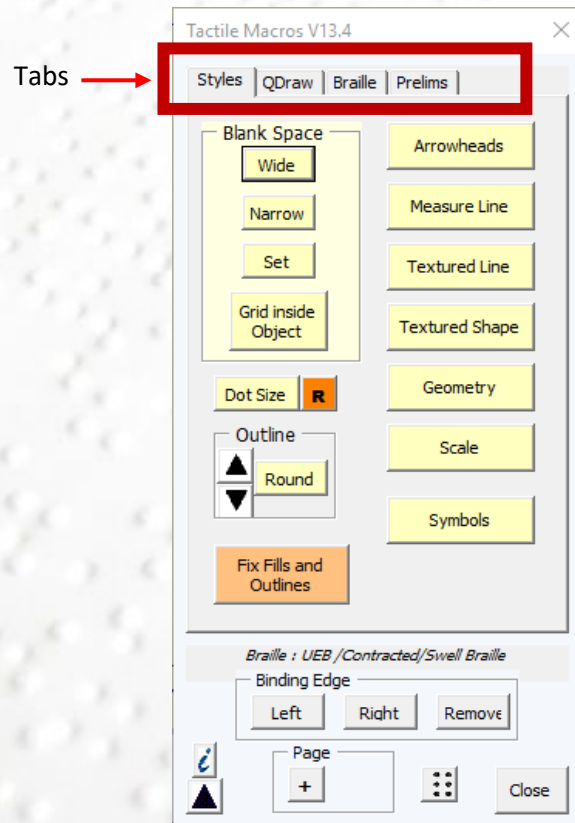
Getting Started in CorelDRAW 2020

- Open CorelDraw 2020.
- Skip the signing in window.
- Select **New from Template** from the Get Started window and Click on **My Templates**. Or go to File on the Menu bar and click on **New from Template**.
- Click on the template named “PRCVI template for CorelDraw 2017” inside My templates window. Then click on Open.
- Click on **Open folder location** if you have saved this template in a different location on your computer. Template saved in this path C:\Users\Username\Documents\Corel\Corel Content\Templates is shown in My templates window.
- PRCVI template is created keeping in mind, needs of transcribers. This template has default for page size : (11" x 11-1/2"), swell braille font, frequently used textures, lines with arrowheads, dots for graphs and maps etc.



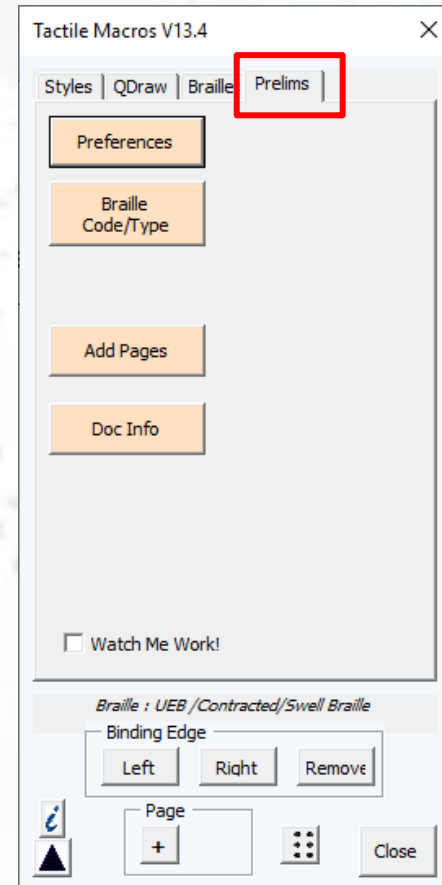
Tactile Macros

- Click on TM  icon on the toolbar.
- There are four tabs on the Tactile Macros Menu: Styles, QDraw, Braille, Prelims.

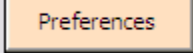


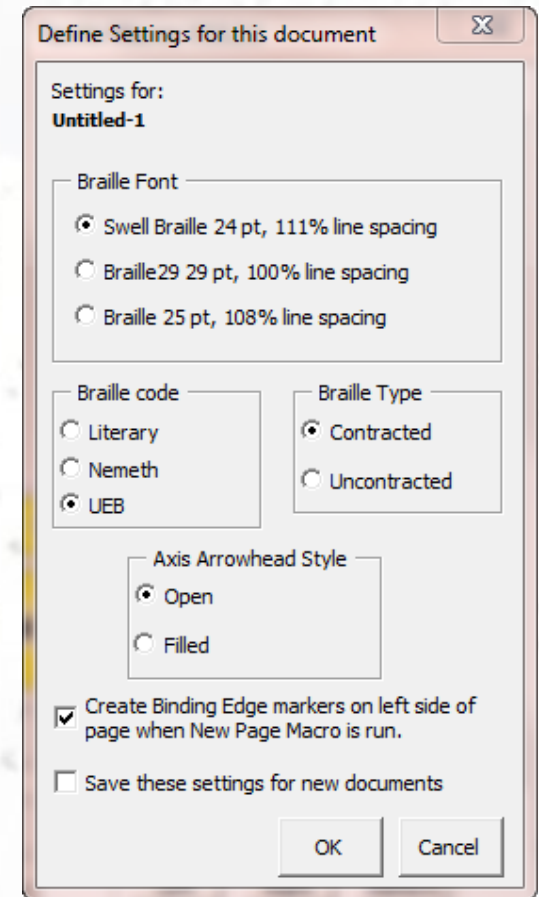
Prelims Tab

- Prelims tab defines settings for the document.
- It has four buttons: Preferences, Braille Code/Type, Add Pages, Doc Info.



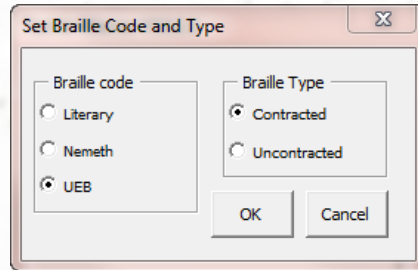
Prelims Tab (cont.)

- Click on  in Prelims Tab
- From the pop-up window, select the Braille Font, Braille code, Braille Type for the document.
- Choose Axis Arrowhead Style (open/filled) for the graphs.
- Select/deselect option of creating binding edge on the document.
- Select/deselect to save these setting for new document
- Click **OK**.
- **Note:** These options should be set before drawing a tactile on a drawing page.

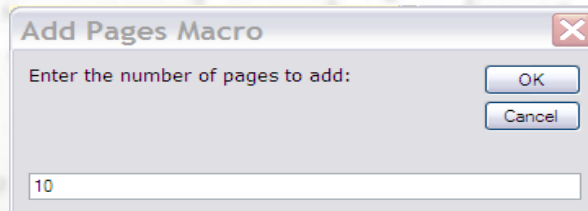


Prelims Tab (cont.)

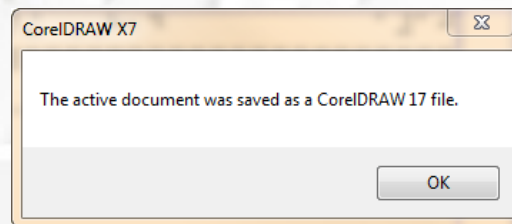
- **Braille Code/Type** sets the braille code and type for the document.
- Click on **Braille Code/Type**
- On the pop-up window, select the braille code, braille type for the document.
- Click **OK**



- **Add Pages** adds drawing pages to the document. You will only use this if you want to add multiple pages in the document.

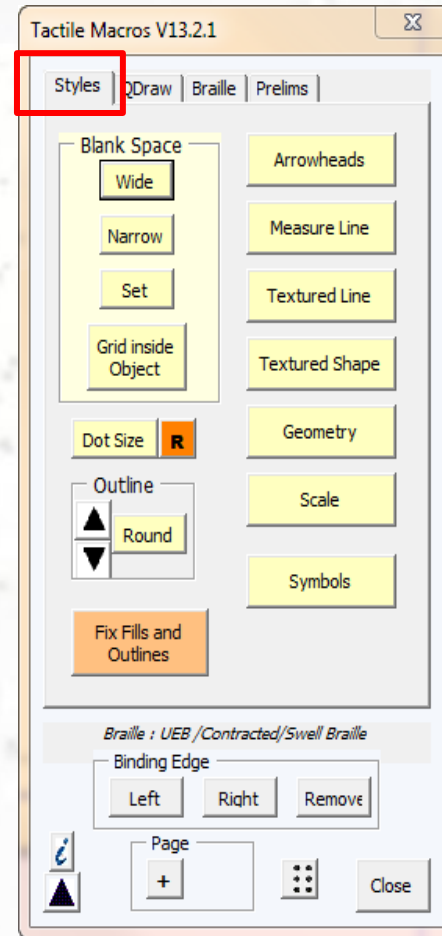


- **Doc Info** Gives information about the document.



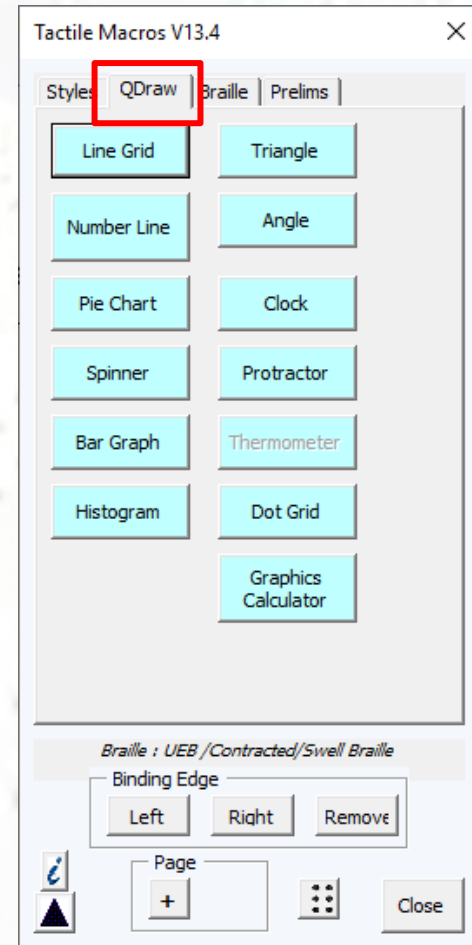
Styles Tab

- Arrowheads
- Measure Line
- Textured Line
- Textured Shape
- Geometry
- Scale
- Symbols
- Blank Space
- Dot Size
- Outline
- Binding Edge



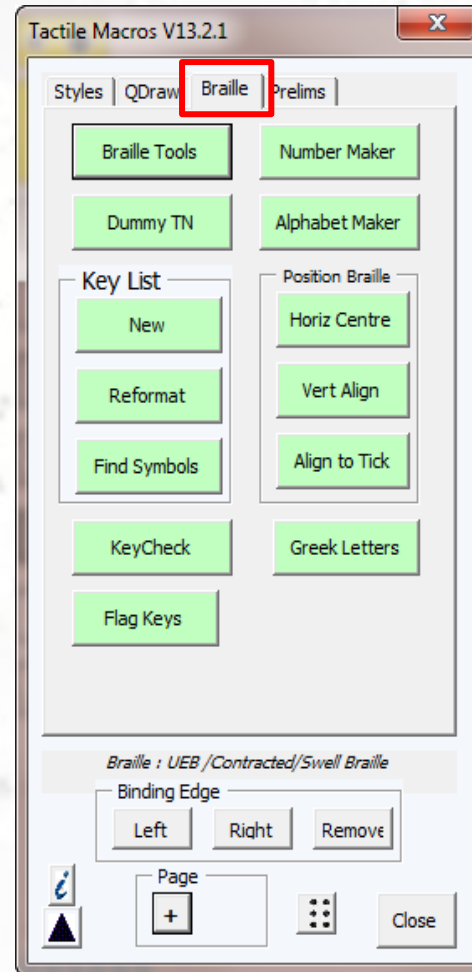
Qdraw Tab

- Line Grid
- Number Line
- Pie Chart
- Spinner
- Bar Graph
- Histogram
- Triangle
- Angle
- Clock
- Protractor
- Dot Grid
- Graphics Calculator



Braille Tab

- Braille Tools
- Number Maker
- Alphabet Maker
- Dummy TN
- Position Braille buttons
- Greek Letters



Websites

- CorelDraw Graphics Suite 2020 – available from www.softchoice.com for an educational price or from [the Corel website](#).
- [Visit the PRCVI Tactile Graphics page](#) or email transcription@prcvi.org for Tactile Macros